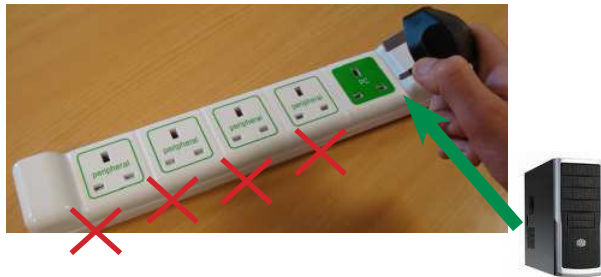


Powerdown Strip Quick Start Guide

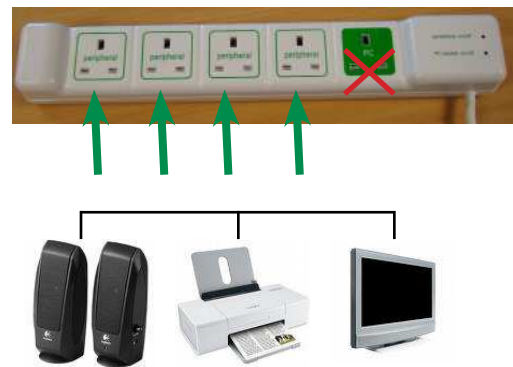
enistic

Product Code BBSP-PD5



1 Plug your PC into the 5 way powerdown strip - it must plug into the PC socket.

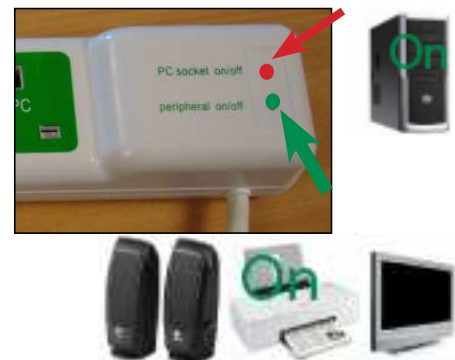
2 Plug your peripherals (e.g. computer screen, printer, speakers) into the other sockets.



3 When the powerdown strip is plugged in, the red light will come on. This means there is power to the PC socket, but **not** to the peripheral sockets. (N.B. due to a printing error, some Powerdown Strips may be incorrectly labelled, but the red light still corresponds to the PC socket and the green light to the peripheral sockets.)

4 When the PC is turned on, the green light will come on - there is now power to the peripheral sockets.

When the PC is turned off, power is automatically cut to all the peripherals.





>40
Watts

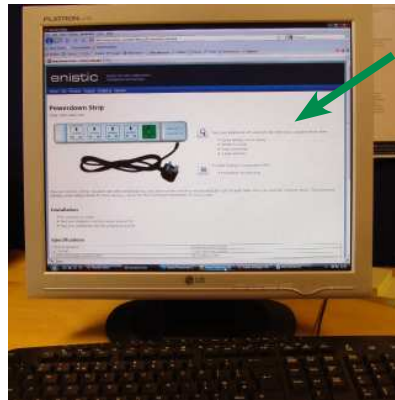


5

The powerdown strip can also be used with the Enistic Powerdown Screensaver. When your PC is drawing less than 40W of power, the green light will turn off and power is switched off to the peripheral sockets.

6

As soon as the PC is active again, power is restored to the peripheral sockets.



<40
Watts



>40
Watts



7

The Enistic Powerdown Strip is not recommended for use with laptops (as they usually use less than 40 Watts of power).



For more information, please visit the support area of our website

www.enistic.com